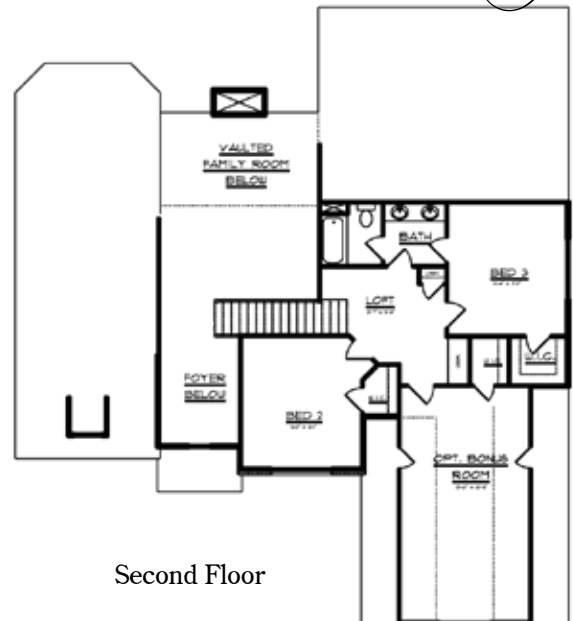


Ashbury



Welcome to the Family



4 Beds/5th Bed/Bonus, 3 Baths

1st Floor 2145 sq. ft.

2nd Floor 936 sq. ft.

Total 3081 sq. ft.

For additional information, please visit www.wynsorhomes.com.



A modified Frank Betz Homes plan. All plans, specifications and pricing are estimates and subject to change. Drawings are shown with some available options and upgrades. Square footage based on a full brick home and may vary if less than full brick. Interior measurements remain the same.



**WYNSOR
HOMES**