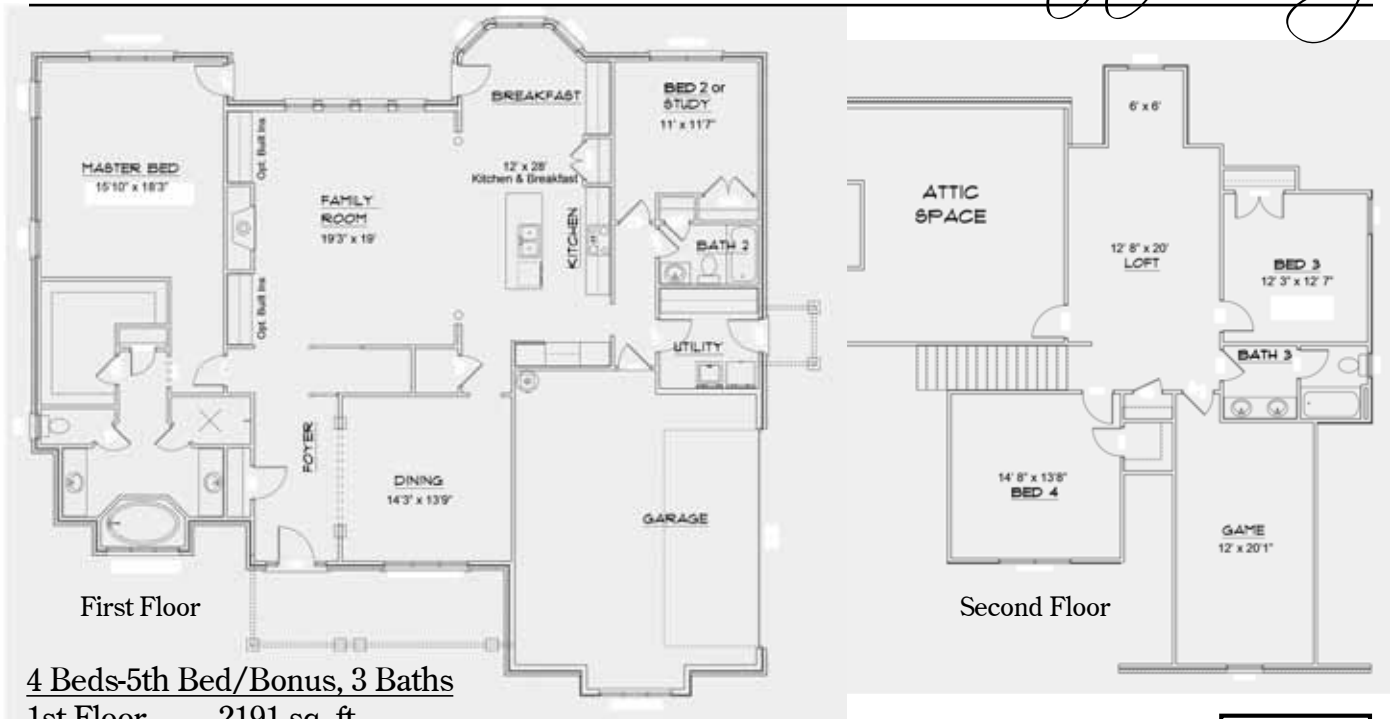


Stone Crest



Welcome to the Family



4 Beds-5th Bed/Bonus, 3 Baths

1st Floor 2191 sq. ft.

2nd Floor 1071 sq. ft.

Total 3262 sq. ft.

For additional information, please visit www.wynsorhomes.com.



A Wynsor Homes plan. All plans, specifications and pricing are estimates and subject to change. Drawings are shown with some available options and upgrades. Square footage based on a full brick home and may vary if less than full brick. Interior measurements remain the same.



**WYNSOR
HOMES**